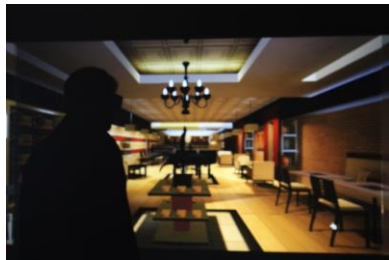


# HES Architectural Studies

## Immersive Visualization Lab

The iLab, housed in Architectural Studies, is a hub of various interdisciplinary collaborations across campus involving Engineering, School of Medicine, Thompson Center for Autism, & School of Journalism among others



# HES Architectural Studies

## IDEC Institutional Merit Award

- By International [Interior Design Educators Council \(IDEC\)](#)
- For the program's progressive online graduate program and its well-placed, distinguished alumni holding major leadership positions. (Also distinguishing honor by *DesignIntelligence*)
- One of eleven PhD programs in world and primary program for educating professors of the field



# HES Architectural Studies

## National Healthy Homes Partnership

The Healthy Homes Partnership directly assists families and stakeholders with information and assistance on mold, asthma triggers, lead poisoning, safe drinking water, carbon monoxide poisoning, and many other aspects of home environmental health, including energy efficiency and safety.

- \* Formed in 1999. At the University of Missouri and MU Extension since 2014
- \* Funded by US HUD and USDA-NIFA \$225,000 per year
- \* Includes Extension and Outreach Educators in all 50 states (13-14 states funded in subgrants per year)
- \* Includes two smart phone apps, consumer guide, stakeholder guide, toolkit, youth curriculum, website, social media, webinars, and newsletters. [healthyhomespartnership.net](http://healthyhomespartnership.net)
- \* Includes a professional training program approved by the National Center for Healthy Housing for certifying stakeholders in healthy homes assessments
- \* Over 364 partnerships have been formed with state and national agencies and organizations
- \* Trains approximately 17,000 stakeholders per year (health professionals, educators, child care providers)
- \* Assists approximately 22,000 consumers/families per year through direct contacts, and approximately 238,000 through social media



# HES Architectural Studies

*Journal of Housing for the Elderly* provides new research and synthesizes the cross-disciplinary efforts made in the area of residential environments for the elderly

- International Journal—published quarterly
- Edited by MU Professor Benjamin Schwarz from 2000 to date



# HES Architectural Studies

## Great Plains ADA Center

Providing technical assistance, information & training on Americans with Disabilities Act

- 5 year, \$5,000,000 Health & Human Services Federal Grant
- [National conference to 800 + persons](#)
- 1400+ members pursuing ADA Coordinator certification

